



## Fortuna BT GPSmart Quick Guide

# Preparation

---

### Hardware Requirement

- Bluetooth enabled Computer or PDA
  - Built-in Bluetooth
  - Add-on Bluetooth module (CF, SD, Memory Stick, or USB adapter)
- Bluetooth on GPSmart must be enabled

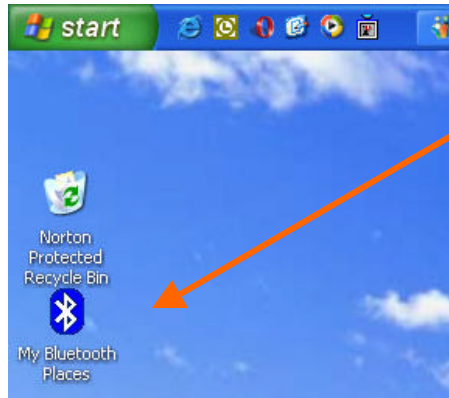
### Software Requirement

- Appropriate drivers must be installed
- Make sure the Bluetooth manager is enabled
- Virtual COM port is assigned

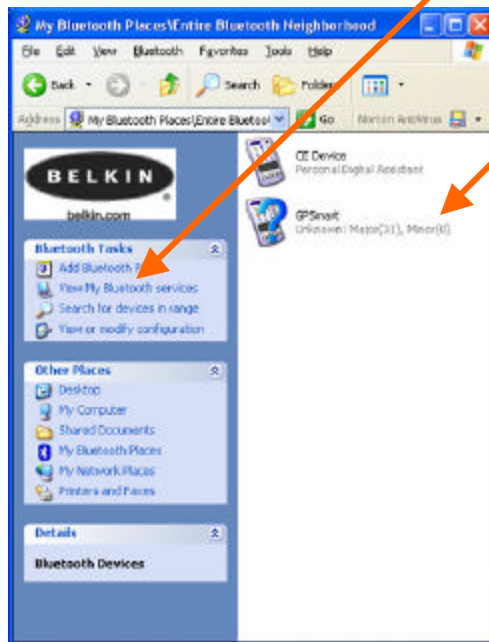
### Notes

- Bluetooth devices have 10 m range by design.
- The BT adapters in the guide are Belkin USB BT adapter and Billionton CF BT adapter.
- The Bluetooth manager screen may look different from manufacturer to manufacturer but the functionality should be similar.
- The GPS software in the guide are MS Street & Trips 2002 and Mapopolis Navigator.

## Fortuna BT GPSmart Quick Guide PC Connection



- From Desktop, open My Bluetooth Places by clicking on **My Bluetooth Places icon**.



- Click **Search for devices in range** to search all available Bluetooth devices.

- GPSmart should be displayed with **question mark icon**.

- Right click and select **Connect SPP Slave**. The connection between computer and GPSmart will be established. The GPSmart icon will become green

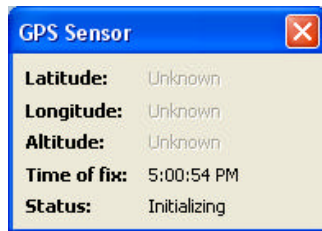


## Fortuna BT GPSmart Quick Guide

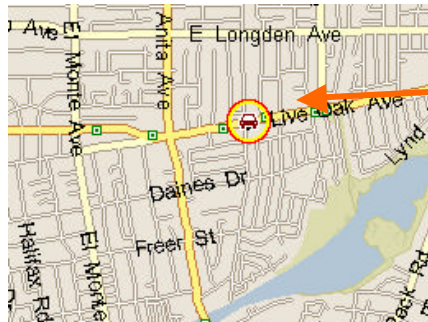
### MS Street & Trips



- Open MS Street & Trips and configure GPS setting by select **Tools** -> **GPS** -> **Configure GPS Receiver...** and a GPS configuration dialog box will open.

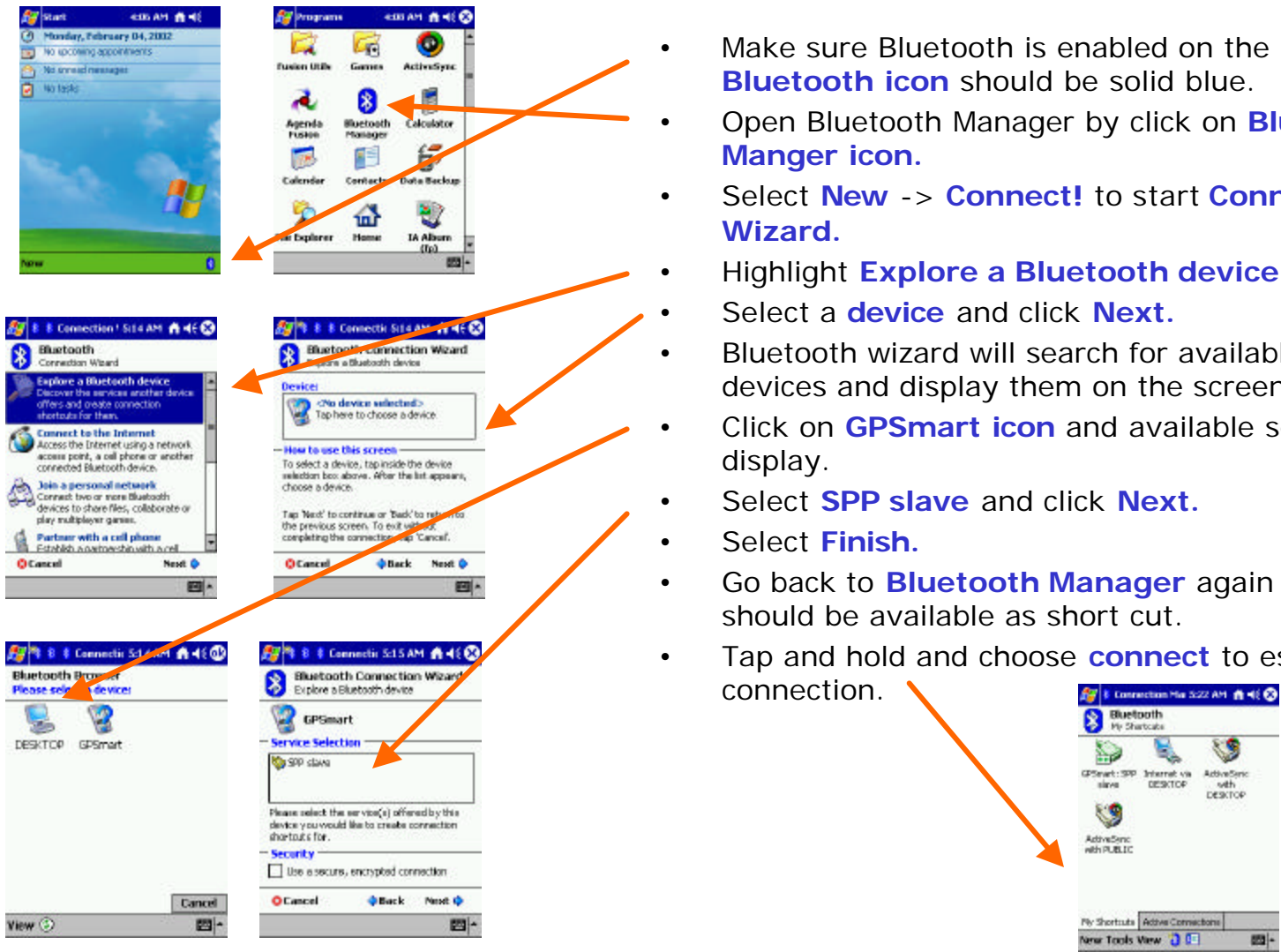


- Select the COM port that virtual serial port is assigned to. It is typically **COM 3**. You can verify the information in system manager.
- Display GPS information by Select **Tools** -> **GPS** -> **Track Position** and GPS sensor dialog box will display.



- When the GPSmart has fixed the position, a **GPS icon** will be displayed on the map indicating current location.

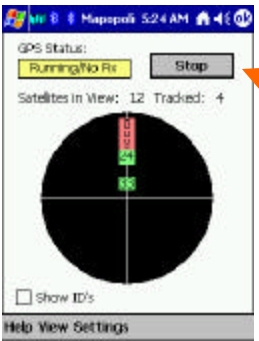
# Fortuna BT GPSSmart Quick Guide Pocket PC Connection



- Make sure Bluetooth is enabled on the Pocket PC. The **Bluetooth icon** should be solid blue.
- Open Bluetooth Manager by click on **Bluetooth Manger icon**.
- Select **New -> Connect!** to start **Connection Wizard**.
- Highlight **Explore a Bluetooth device** and click **Next**.
- Select a **device** and click **Next**.
- Bluetooth wizard will search for available Bluetooth devices and display them on the screen.
- Click on **GPSSmart icon** and available service will display.
- Select **SPP slave** and click **Next**.
- Select **Finish**.
- Go back to **Bluetooth Manager** again and **GPSSmart** should be available as short cut.
- Tap and hold and choose **connect** to establish connection.

# Fortuna BT GPSmart Quick Guide

## Mapopolis



- Start **Mapopolis** application.
- Select **Tools** -> **GPS** to open GPS screen.
- Select **Settings** to open GPS option settings page.
- Uncheck **Auto-Detect COM port** and set the setting to **COM 6** (Bluetooth Virtual COM port) and Baud Rate to **4800**.
- Click on **Start** to connect to GPSmart and to acquire satellites.
- When the GPSmart has fixed the position, a **GPS icon** will be displayed on the map indicating current location